

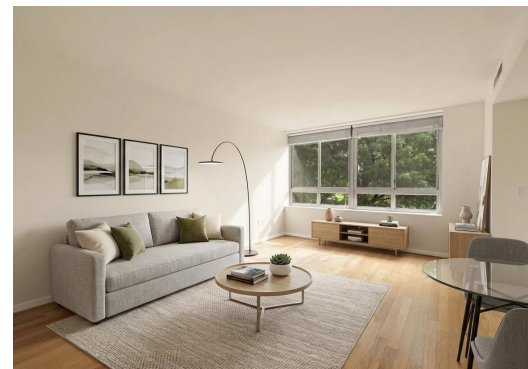
COMPASS

Jenn Smira  
& CO.

FINE  
HOMES

# 350 G St SW #N323

Potomac Place | Studio | 1 Bathroom | Spacious Studio at the Wharf



# Turn-Key Studio at the Wharf & SW Waterfront

Welcome to 350 G Street SW #N323, a beautifully maintained studio condominium at Potomac Place, one of the premier condominium communities in Washington, D.C.'s Southwest Waterfront. Ideally located just moments from The Wharf, this light-filled residence offers an exceptional opportunity for a first-time homebuyer, investor, or anyone seeking a low-maintenance home in one of the city's most desirable waterfront neighborhoods. Inside, rich hardwood floors, fresh paint, and an open-concept layout create a bright and inviting living space designed to maximize both comfort and functionality. Expansive windows fill the home with natural light, while the generous floor plan easily accommodates separate living, dining, and sleeping areas. The layout also offers the potential to create a defined bedroom by adding a partition wall, providing additional privacy without sacrificing openness. The kitchen is thoughtfully designed with crisp countertops, abundant cabinetry, and a full appliance suite, while the spacious bathroom, generous closet space, and in-unit washer and dryer add everyday convenience.

Residents of Potomac Place Condominium enjoy an impressive collection of amenities including a 24-hour concierge, outdoor swimming pool, fitness center, resident lounge, business center, meeting rooms, party room, secure building access, and beautifully maintained common areas, creating a true full-service condominium lifestyle. Perfectly positioned in the heart of the Southwest Waterfront, 350 G Street SW #N323 places residents just steps from The Wharf, Waterfront Metro, Nationals Park, Audi Field, Navy Yard, Arena Stage, the National Mall, and the Potomac River waterfront. Whole Foods, acclaimed restaurants, cafés, waterfront parks, entertainment venues, and scenic walking and biking trails are all within easy reach, while nearby Metro access and major commuter routes provide effortless connectivity throughout Washington, D.C., Maryland, and Northern Virginia. Whether you're searching for a Washington, D.C. pied-à-terre, investment property, or primary residence, 350 G Street SW #N323 offers the perfect combination of location, full-service amenities, modern comfort, and exceptional value in one of Southwest Washington's most vibrant and rapidly evolving communities.



Jenn Smira

REALTOR®,  
Executive Vice President

202.280.2060  
jsmira@jennsmira.com



Douglas Morningstar

REALTOR®, DC & VA

202.321.0813  
douglas.morningstar@jennsmira.com



Compass Real Estate is a licensed real estate broker. All material is intended for informational purposes only and is compiled from sources deemed reliable but is subject to errors, omissions, changes in price, condition, sale, or withdrawal without notice. No statement is made as to the accuracy of any description or measurements (including square footage). This is not intended to solicit property already listed. No financial or legal advice provided. Equal Housing Opportunity. Photos may be virtually staged or digitally enhanced and may not reflect actual property conditions. Compass is licensed as Compass Real Estate in DC and as Compass in Virginia and Maryland. 1313 14th Street NW, Washington, DC 20005 | 202.386.6330

