

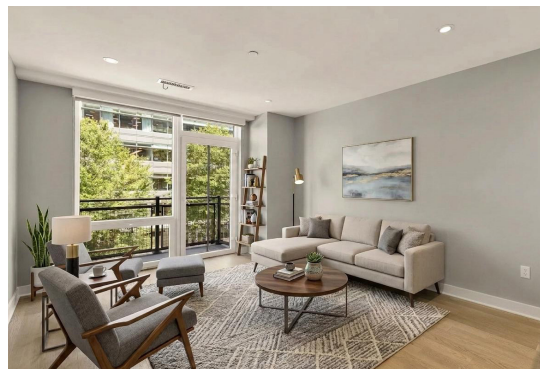
COMPASS

Jenn Smira  
& CO.

FINE  
HOMES

# 37 L ST SE #301

Kennedy on L | 2 Bedroom | 2 Bathroom | Bespoke Finishes



# Luxury Living at The Kennedy on L in the Heart of Navy Yard

Welcome to 37 L Street SE #301 at The Kennedy on L, a luxury boutique residence in the heart of the Ballpark District. This beautifully appointed 1 bedroom plus den, 2 bath home with a private balcony blends sophisticated design, high-end finishes, and an exceptional location in one of Washington's most vibrant neighborhoods. A welcoming foyer opens into bright, open living spaces where oversized windows frame leafy streetscape views and fill the home with natural light. Soaring ceilings, wide-plank flooring, and a thoughtfully designed floor plan create an airy and spacious feel throughout. The expansive living area offers ample room for both a generous seating arrangement and a dedicated dining area, making the home equally suited for entertaining and everyday living.

At the heart of the residence, the designer kitchen showcases sleek contemporary cabinetry, quartz countertops, premium Bosch appliances, and abundant storage and workspace. The kitchen flows effortlessly into the living area and out to the private balcony, creating a seamless indoor-outdoor living experience. The primary suite serves as a peaceful retreat with generous closet space and a beautifully finished en-suite bath featuring refined materials and timeless design. The versatile den offers tremendous flexibility and can easily function as a guest room, home office, or both. A second full bath with elegant spa-inspired finishes complements the home's thoughtful layout.

The Kennedy on L offers an elevated lifestyle with a collection of exceptional amenities including concierge services, controlled building access, a resident lounge, two expansive rooftop terraces, a pet spa, and secure storage. Every detail has been thoughtfully curated to provide convenience, comfort, and a sophisticated urban living experience. Ideally situated in Navy Yard and the Capitol Riverfront, 37 L Street SE #301 places you moments from Nationals Park, The Wharf, Yards Park, the Anacostia Riverwalk Trail, and some of the city's most acclaimed restaurants, breweries, cafés, and waterfront destinations.



Jenn Smira

REALTOR®,  
Executive Vice President

202.280.2060  
jsmira@jennsmira.com



Erica Breaux

REALTOR®,  
DC | MD | VA

985.226.0267  
erica.breaux@jennsmira.com



Compass Real Estate is a licensed real estate broker. All material is intended for informational purposes only and is compiled from sources deemed reliable but is subject to errors, omissions, changes in price, condition, sale, or withdrawal without notice. No statement is made as to the accuracy of any description or measurements (including square footage). This is not intended to solicit property already listed. No financial or legal advice provided. Equal Housing Opportunity. Photos may be virtually staged or digitally enhanced and may not reflect actual property conditions. Compass is licensed as Compass Real Estate in DC and as Compass in Virginia and Maryland. 1313 14th Street NW, Washington, DC 20005 | 202.386.6330

