

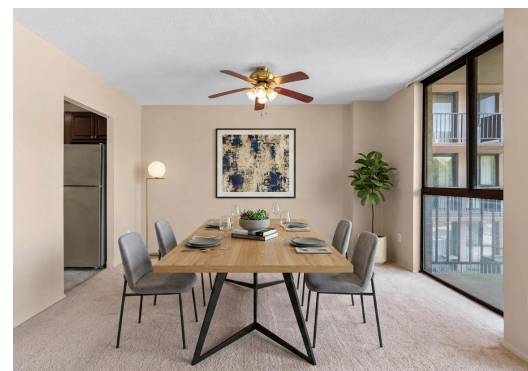
COMPASS

Jenn Smira
& CO.

FINE
HOMES

6100 WESTCHESTER PARK DR #501

The Westchester Park | 1 Bedroom | 1 Bathroom | Amenity Rich Community



Spacious & Sun-Filled Condo in Westchester Park Community



Welcome to 6100 Westchester Park Drive #501, an expansive residence within the sought-after Westchester Park community, offering generous space, natural light, and everyday convenience. Inside, a bright, open layout is defined by large picture windows that fill the living and dining areas with natural light. Neutral tones and full-length carpeting create a comfortable, cohesive feel, while direct access to the private balcony extends the living space outdoors—perfect for morning coffee and entertaining. The updated kitchen is thoughtfully designed with rich cherry cabinetry, ample counter space, and a stainless steel appliance suite, providing both functionality and style. The oversized bedroom offers excellent proportions, highlighted by a walk-in closet and easy access to a well-appointed full bath.



Residents of Westchester Park enjoy a wide array of amenities, including 24-hour concierge service, secure entry, a fitness center, outdoor pool, party room, convenience store, and playground, along with laundry facilities on each floor and a condo fee that includes all utilities. The community's location is equally appealing, set adjacent to Greenbelt Regional Park, offering miles of trails and outdoor recreation. Commuting is seamless with access to the University of Maryland shuttle, bus service to Greenbelt Metro (Green and Yellow Lines), and convenient connections to I-495, I-295, and I-95. A spacious and well-located home offering comfort, convenience, and access to everything the area has to offer at 6100 Westchester Park Drive #501.



Jenn Smira
REALTOR®,
Executive Vice President
202.280.2060
jsmira@jennsmira.com



Don Bunuan
REALTOR®, DC & MD
301.213.6332
Don.Bunuan@jennsmira.com



Compass Real Estate is a licensed real estate broker. All material is intended for informational purposes only and is compiled from sources deemed reliable but is subject to errors, omissions, changes in price, condition, sale, or withdrawal without notice. No statement is made as to the accuracy of any description or measurements (including square footage). This is not intended to solicit property already listed. No financial or legal advice provided. Equal Housing Opportunity. Photos may be virtually staged or digitally enhanced and may not reflect actual property conditions. Compass is licensed as Compass Real Estate in DC and as Compass in Virginia and Maryland. 1313 14th Street NW, Washington, DC 20005 | 202.386.6330

