

COMPASS

Jenn Smira
& CO.

FINE
HOMES

11601 Magruder Ln

Old Farm | 6 Bedrooms | 4 Bathrooms | Expansive Private Lot



Set quietly at the end of a tree-lined cul-de-sac in the sought-after Old Farm community, this all-brick three-level residence offers a refined balance of modern updates and effortless livability. Backing to a wooded backdrop and set on a deep, private lot rarely found in the neighborhood, the home spans over 3,200 square feet and is defined by thoughtfully curated enhancements and light-filled interiors that feel both elevated and welcoming. Extensively updated and meticulously maintained, the home reflects a clear attention to quality and detail. A comprehensive renovation introduced a fully reimagined kitchen with new appliances, an expanded and beautifully redesigned primary bath, and a main-level full bath with a zero-entry shower. Additional improvements, including a new roof (2016), HVAC system (2017), replacement windows (2014), a 200-amp electrical upgrade, enhanced insulation, updated gutters with leaf guards, and a refreshed sunroom, ensure long-term efficiency and peace of mind.

Inside, the home unfolds through a series of generous, light-filled spaces anchored by hardwood flooring across the main and upper levels. Large windows draw in natural light throughout the day, while two fireplaces add warmth and architectural presence. The layout flows naturally, with multiple connections to the rear deck and outdoor areas, creating a seamless relationship between indoor and outdoor living. A bright solarium offers a welcoming place to gather, unwind, or start the day. At the center of the home, the kitchen balances clean design with everyday function. It features soft-close cabinetry, granite countertops, stainless steel appliances, an artisan tile backsplash, gas cooktop with hood, convection wall oven, and a peninsula with bar seating, complemented by a mobile island for additional prep and entertaining space.

Upstairs, the primary suite serves as a true retreat, quiet, expansive, and filled with natural light. An adjoining bonus room offers flexibility as a home office, nursery, or dressing area, while the spa-inspired bath has been thoughtfully expanded with designer finishes, including a glass-enclosed shower and dual vanity. Three additional bedrooms and an updated hall bath complete the upper level. Back downstairs off the main level there is exceptional versatility, featuring an additional expansive space, that can function as a bedroom or family room, and a full bath finished with a zero-entry shower, ample storage, and walk-out access. This level is well-suited for guests, recreation, or multi-generational living, offering accessible and flexible space for a variety of needs. One level further, an additional recreation room and full bath with subway tile create even more room to relax, entertain, or expand your lifestyle needs.

Outside, the setting truly sets this home apart. The expansive deck and private backyard open to the wooded landscape beyond, creating a peaceful, secluded retreat. A newer saltwater hot tub adds a luxurious touch, offering the perfect place to relax and unwind year-round. Beyond the property, Old Farm stands out as a truly special community, known for its strong neighborhood feel and beloved annual traditions, including the July 4th parade, summer picnic, and winter party. Residents also enjoy access to two community pools (membership required), adding to the lifestyle appeal. Ideally positioned just minutes from Pike & Rose, Wildwood Shopping Center, Georgetown Square, Montgomery Mall, Strathmore Music Center, Cabin John Park, and Tilden Woods Park, as well as two neighborhood pools, the location offers both lifestyle and convenience. With easy access to I-495, I-270, and the Grosvenor Metro, and zoned for top-rated Montgomery County schools, the setting is as practical as it is desirable. A truly special offering, this is a home that has been thoughtfully reimagined, where modern design, enduring quality, privacy, and a premier neighborhood come together seamlessly.



Jenn Smira

REALTOR®,
Executive Vice President

202.280.2060
jsmira@jennsmira.com



Shelley Stuart

REALTOR®,
DC | MD

301.801.5159
s.stuart@jennsmira.com

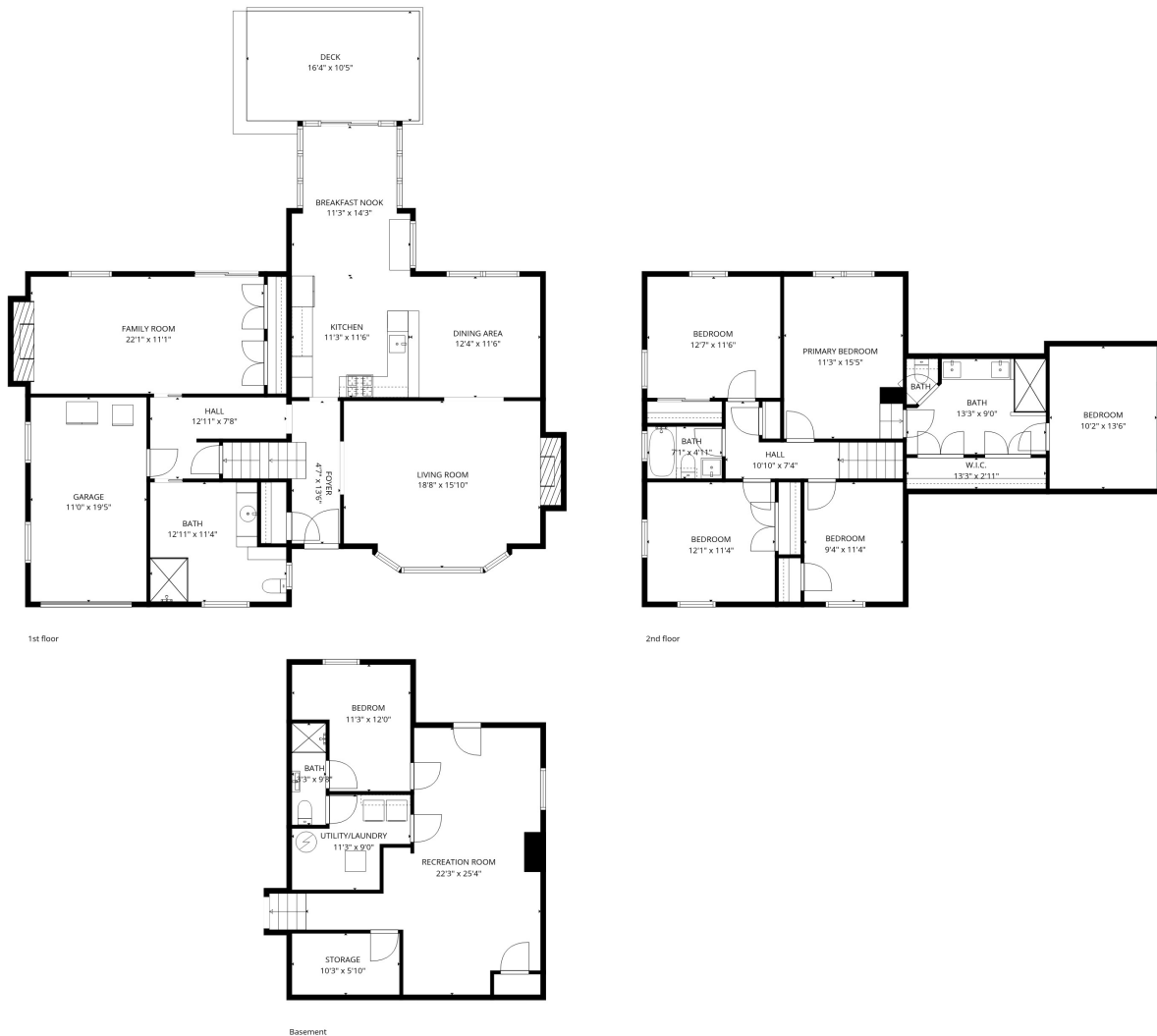


Compass Real Estate is a licensed real estate broker. All material is intended for informational purposes only and is compiled from sources deemed reliable but is subject to errors, omissions, changes in price, condition, sale, or withdrawal without notice. No statement is made as to the accuracy of any description or measurements (including square footage). This is not intended to solicit property already listed. No financial or legal advice provided. Equal Housing Opportunity. Photos may be virtually staged or digitally enhanced and may not reflect actual property conditions. Compass is licensed as Compass Real Estate in DC and as Compass in Virginia and Maryland. 1313 14th Street NW, Washington, DC 20005 | 202.386.6330



11601 Magruder Ln

Old Farm | 6 Bedrooms | 4 Bathrooms | Expansive Private Lot



Jenn Smira
REALTOR®,
Executive Vice President
202.280.2060
jsmira@jennsmira.com



Shelley Stuart
REALTOR®,
DC | MD
301.801.5159
s.stuart@jennsmira.com



Compass Real Estate is a licensed real estate broker. All material is intended for informational purposes only and is compiled from sources deemed reliable but is subject to errors, omissions, changes in price, condition, sale, or withdrawal without notice. No statement is made as to the accuracy of any description or measurements (including square footage). This is not intended to solicit property already listed. No financial or legal advice provided. Equal Housing Opportunity. Photos may be virtually staged or digitally enhanced and may not reflect actual property conditions. Compass is licensed as Compass Real Estate in DC and as Compass in Virginia and Maryland. 1313 14th Street NW, Washington, DC 20005 | 202.386.6330

