

COMPASS

Jenn Smira
& CO.

FINE
HOMES

1409 G ST NE #5

Capitol Hill | 3 Bedrooms | 2.5 Bathrooms | Private Expansive Patio



Bright & Stylish Two-Level Living Steps From H Street

Welcome to this thoughtfully updated two-level condo, offering the perfect blend of comfort, style, and effortless city living. The main level unfolds with an inviting open layout, where a modern kitchen with stainless steel appliances, ample cabinetry, and a generous island sets the tone for both cooking and gathering. Sunlight pours into the living area through oversized windows, creating a bright, welcoming space. A well-appointed powder room completes this floor.

The lower level is designed for relaxation and privacy, featuring a large primary suite with a walk-in closet and its own en-suite bath. Two additional bedrooms, each roomy and filled with natural light provide endless flexibility for guest space, a home office, or creative use. Outdoors, a truly exceptional feature awaits: an expansive private patio. Whether you're hosting friends, grilling in the summer, or enjoying quiet evenings by a fire pit, this outdoor oasis transforms daily living.

The building is pet-friendly, has a low monthly condo fee, and sits just one block from the lively H Street corridor, giving you easy access to dining, entertainment, shopping, and transportation. Rental-friendly policies make this an excellent opportunity for investors as well. Warm, welcoming, and full of charm, this home offers a rare combination of space, updates, and location in one of D.C.'s most dynamic neighborhoods.



Jenn Smira

REALTOR®,
Executive Vice President

202.280.2060
jsmira@jennsmira.com

COMPASS



Erica Breaux

REALTOR®,
DC | MD | VA

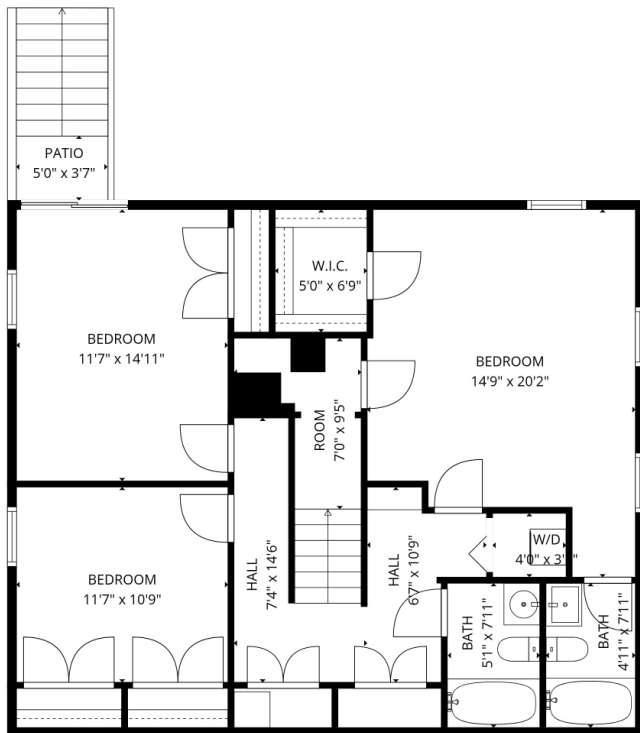
985.226.0267
erica.breaux@jennsmira.com

Compass Real Estate is a licensed real estate broker. All material is intended for informational purposes only and is compiled from sources deemed reliable but is subject to errors, omissions, changes in price, condition, sale, or withdrawal without notice. No statement is made as to the accuracy of any description or measurements (including square footage). This is not intended to solicit property already listed. No financial or legal advice provided. Equal Housing Opportunity. Photos may be virtually staged or digitally enhanced and may not reflect actual property conditions. Compass is licensed as Compass Real Estate in DC and as Compass in Virginia and Maryland. 1313 14th Street NW, Washington, DC 20005 | 202.386.6330

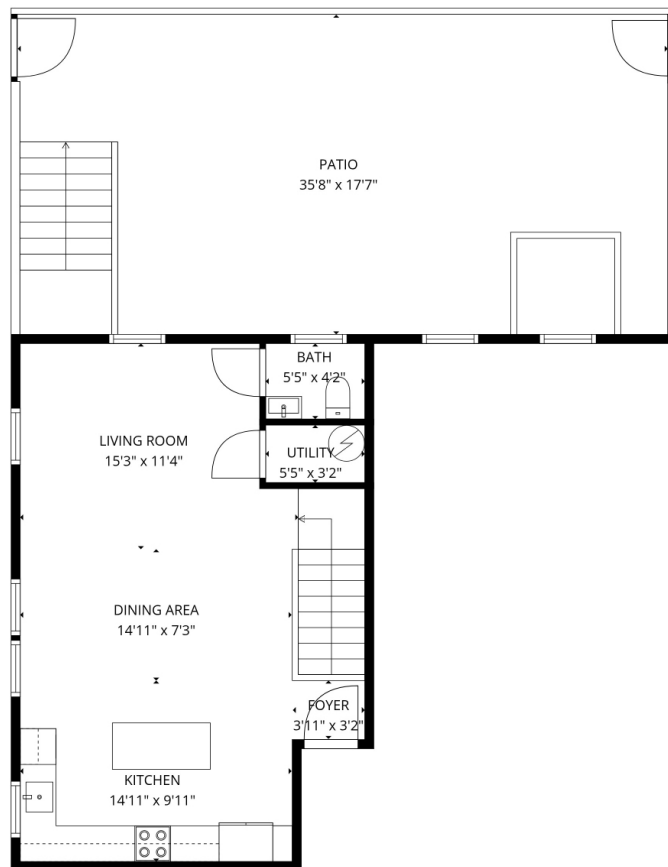


1409 G ST NE #5

Capitol Hill | 3 Bedrooms | 2.5 Bathrooms | Private Expansive Patio



1st floor



2nd floor

TOTAL: 1479 sq. ft
1st floor: 967 sq. ft, 2nd floor: 512 sq. ft
EXCLUDED AREAS: PATIO: 676 sq. ft

MEASUREMENTS DEEMED HIGHLY RELIABLE BUT NOT GUARANTEED.



Jenn Smira

REALTOR®,
Executive Vice President

202.280.2060
jsmira@jennsmira.com



Erica Breaux

REALTOR®,
DC | MD | VA

985.226.0267
erica.breaux@jennsmira.com

COMPASS

Compass Real Estate is a licensed real estate broker. All material is intended for informational purposes only and is compiled from sources deemed reliable but is subject to errors, omissions, changes in price, condition, sale, or withdrawal without notice. No statement is made as to the accuracy of any description or measurements (including square footage). This is not intended to solicit property already listed. No financial or legal advice provided. Equal Housing Opportunity. Photos may be virtually staged or digitally enhanced and may not reflect actual property conditions. Compass is licensed as Compass Real Estate in DC and as Compass in Virginia and Maryland. 1313 14th Street NW, Washington, DC 20005 | 202.386.6330

