

COMPASS

Jenn Smira  
& CO.

FINE  
HOMES

# 428 Shepherd ST NW

Petworth | 5 Bedrooms | 3.5 Bathrooms | Designer Finishes





# Modern Luxury in Petworth

Introducing a striking new residence in the heart of Petworth—this 5-bedroom, 3.5-bath home combines architectural sophistication with curated design for a truly distinguished offering. Wide-plank hardwoods run across every level, while designer fixtures and finishes create a cohesive sense of style and refinement throughout. The main floor unfolds with a sunlit open layout anchored by a dramatic fireplace feature wall. A generous dining area flows into the chef's kitchen, outfitted with Thor stainless steel appliances, a six-burner gas range, wine cooler, and quartz countertops with a matching backsplash. An integrated Sonos system enhances the living experience, while sliding doors open to a private deck, landscaped green space, and secure parking pad.

Upstairs, three spacious bedrooms include a spectacular primary suite with soaring ceilings, walls of windows, and three custom closets. The spa-inspired en-suite bath features bespoke tilework, dual vanity, glass-enclosed shower, towel warmer, and a soaking tub designed for relaxation. A dedicated laundry room with folding station adds everyday convenience. The fully finished lower level provides exceptional versatility with its own kitchen, second laundry, two bedrooms, a full bath, and private front and rear entrances—perfect for guests, an au pair, multigenerational living, or rental income potential. From its welcoming curb appeal to the thoughtful craftsmanship in every room, this residence embodies modern luxury in one of Washington's most dynamic and desirable neighborhoods.



Jenn Smira

REALTOR®,  
Executive Vice President

202.280.2060  
jsmira@jennsmira.com

COMPASS



Alex Guckenberger

REALTOR®  
New Construction Specialist

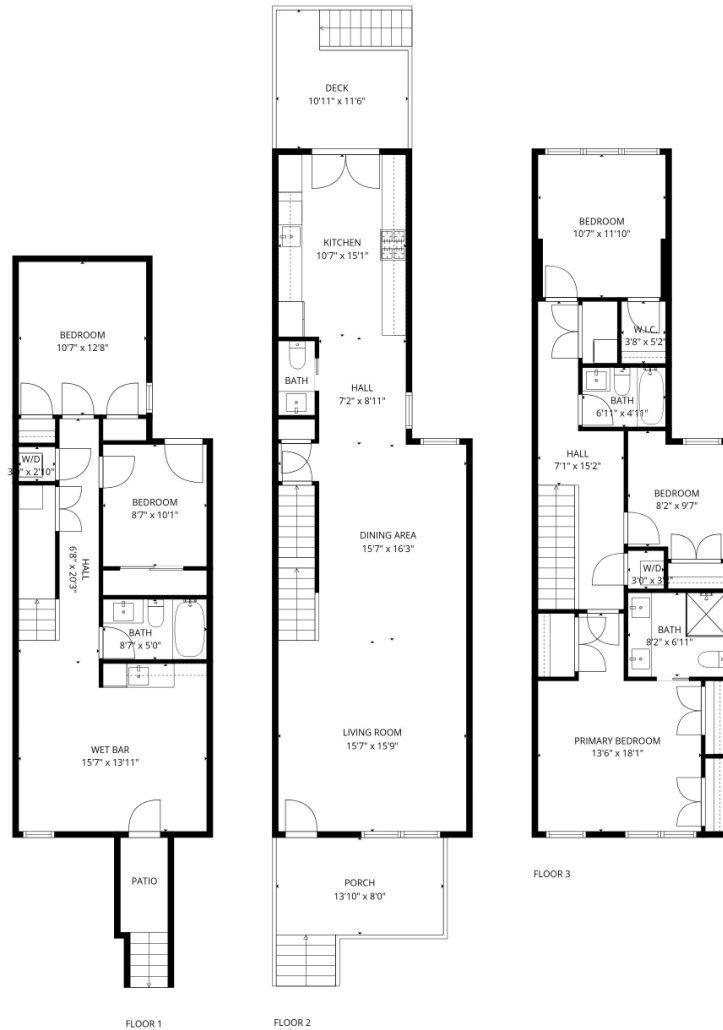
704.302.4848  
alex.guckenberger@jennsmira.com

Compass Real Estate is a licensed real estate broker. All material is intended for informational purposes only and is compiled from sources deemed reliable but is subject to errors, omissions, changes in price, condition, sale, or withdrawal without notice. No statement is made as to the accuracy of any description or measurements (including square footage). This is not intended to solicit property already listed. No financial or legal advice provided. Equal Housing Opportunity. Photos may be virtually staged or digitally enhanced and may not reflect actual property conditions. Compass is licensed as Compass Real Estate in DC and as Compass in Virginia and Maryland. 1313 14th Street NW, Washington, DC 20005 | 202.386.6330



# 428 Shepherd ST NW

Petworth | 5 Bedrooms | 3.5 Bathrooms | Designer Finishes



Jenn Smira

REALTOR®,  
Executive Vice President

202.280.2060  
jsmira@jennsmira.com



Alex Guckenberger

REALTOR®  
New Constuction Specialist

704.302.4848  
alex.guckenberger@jennsmira.com

COMPASS

Compass Real Estate is a licensed real estate broker. All material is intended for informational purposes only and is compiled from sources deemed reliable but is subject to errors, omissions, changes in price, condition, sale, or withdrawal without notice. No statement is made as to the accuracy of any description or measurements (including square footage). This is not intended to solicit property already listed. No financial or legal advice provided. Equal Housing Opportunity. Photos may be virtually staged or digitally enhanced and may not reflect actual property conditions. Compass is licensed as Compass Real Estate in DC and as Compass in Virginia and Maryland. 1313 14th Street NW, Washington, DC 20005 | 202.386.6330

