

COMPASS

Jenn Smira
& CO.

FINE
HOMES

3883 Connecticut Ave #111

Cleveland Park | 1 Bedroom | 1 Bathroom | Garage Parking



Refined Cleveland Park Condo with Parking

This sun-filled and spacious 1-bedroom, 1-bathroom condo with garage parking is perfectly positioned along Cleveland Park's vibrant Connecticut Avenue corridor, offering both convenience and serenity. Set in a premier building location, the residence overlooks lush greenery and a tranquil backdrop that leads directly into Rock Creek Park.

Inside, an airy open-plan living and dining area is enhanced by oversized Juliet balcony windows and soaring ceilings, filling the home with natural light. The gourmet kitchen is appointed with granite countertops, updated appliances, and a breakfast bar designed for both everyday living and effortless entertaining. The generous bedroom includes a large closet with built-in shelving, while the pristine bathroom offers a tub-shower combination and in-unit washer/dryer.

Building amenities elevate the lifestyle, with a rooftop featuring a pool, grilling stations, and sweeping views—perfect for gatherings or quiet evenings under the sky. Additional conveniences include 24/7 concierge service, a fitness center, and a resident lounge/business center, all within this pet-friendly community.



Jenn Smira

REALTOR®,
Executive Vice President

202.280.2060
jsmira@jennsmira.com

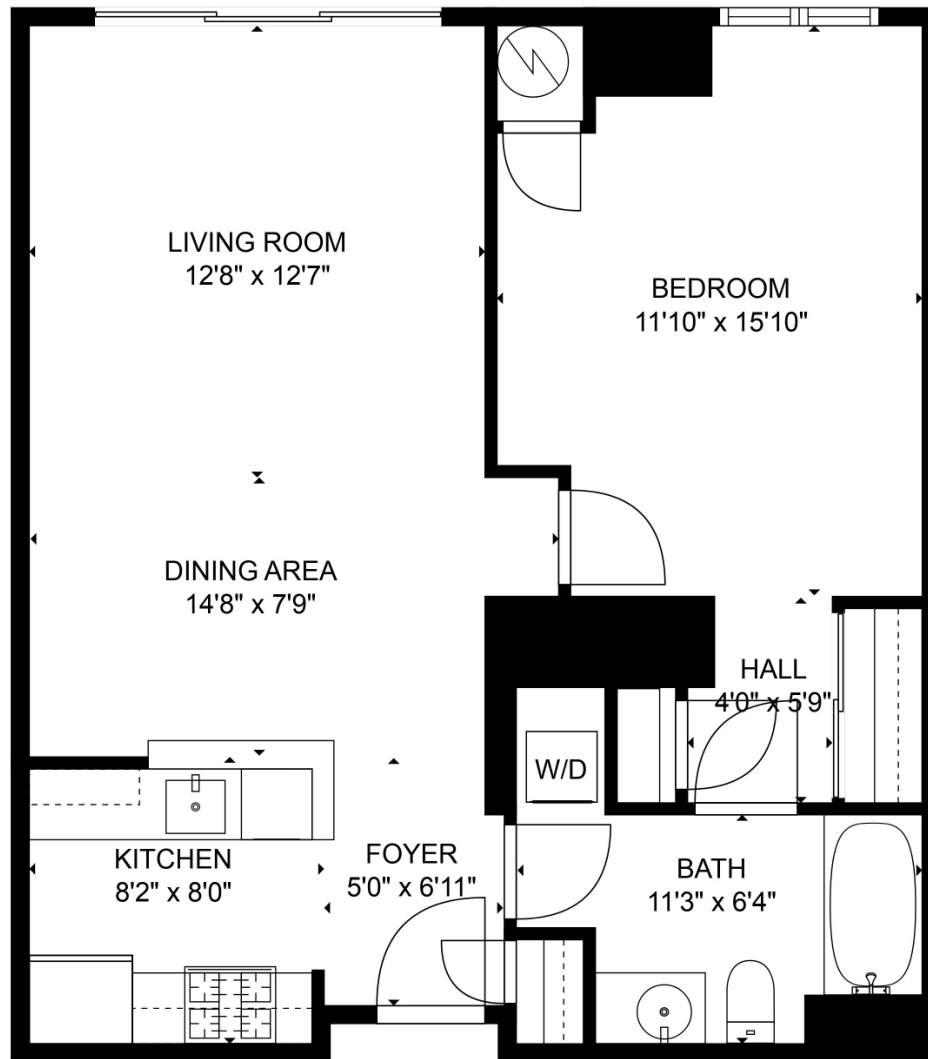
COMPASS

Compass Real Estate is a licensed real estate broker. All material is intended for informational purposes only and is compiled from sources deemed reliable but is subject to errors, omissions, changes in price, condition, sale, or withdrawal without notice. No statement is made as to the accuracy of any description or measurements (including square footage). This is not intended to solicit property already listed. No financial or legal advice provided. Equal Housing Opportunity. Photos may be virtually staged or digitally enhanced and may not reflect actual property conditions. Compass is licensed as Compass Real Estate in DC and as Compass in Virginia and Maryland. 1313 14th Street NW, Washington, DC 20005 | 202.386.6330



3883 Connecticut Ave NW #111

Cleveland Park | 1 Bedroom | 1 Bathroom | Garage Parking



Jenn Smira

REALTOR®,
Executive Vice President

202.280.2060

jsmira@jennsmira.com

COMPASS

Compass Real Estate is a licensed real estate broker. All material is intended for informational purposes only and is compiled from sources deemed reliable but is subject to errors, omissions, changes in price, condition, sale, or withdrawal without notice. No statement is made as to the accuracy of any description or measurements (including square footage). This is not intended to solicit property already listed. No financial or legal advice provided. Equal Housing Opportunity. Photos may be virtually staged or digitally enhanced and may not reflect actual property conditions. Compass is licensed as Compass Real Estate in DC and as Compass in Virginia and Maryland. 1313 14th Street NW, Washington, DC 20005 | 202.386.6330

