

COMPASS

Jenn Smira
& CO.

FINE
HOMES

4800 Georgia Ave NW #301

Petworth | 2 Bedrooms | 2 Bathrooms | Corner Unit



Stylish Petworth Two-Bedroom Retreat

Welcome to 4800 Georgia Ave NW #301, where modern sophistication meets vibrant Petworth living. This stylish corner condo is designed for comfort and convenience, with every detail thoughtfully crafted. Step inside to find hardwood floors throughout and a gourmet kitchen featuring an updated appliance suite, light Silestone countertops, and dark cabinetry—a timeless combination that's both elegant and functional. The open layout is anchored by walls of windows that bathe the home in natural light, creating a warm, inviting atmosphere.

The bay-front primary bedroom is a true retreat, drenched in sunlight and offering a serene space to unwind. The spacious second bedroom offers flexibility—perfect for a home office, guest room, or both. Two private balconies extend your living outdoors, perfect for morning coffee, evening wine, or simply enjoying the views of the city. Private storage adds a valuable bonus, making urban living even more effortless. Located in the heart of Petworth, you'll be just steps from the lively bars and restaurants on Upshur Street, with Metro, grocery stores, and endless entertainment options close at hand. A modern home, two balconies, and a dynamic neighborhood—#301 truly has it all.

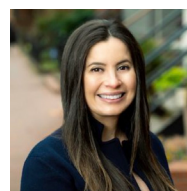


Jenn Smira

REALTOR®,
Executive Vice President

202.280.2060
jsmira@jennsmira.com

COMPASS



Isabella Pinto

REALTOR®, DC & MD

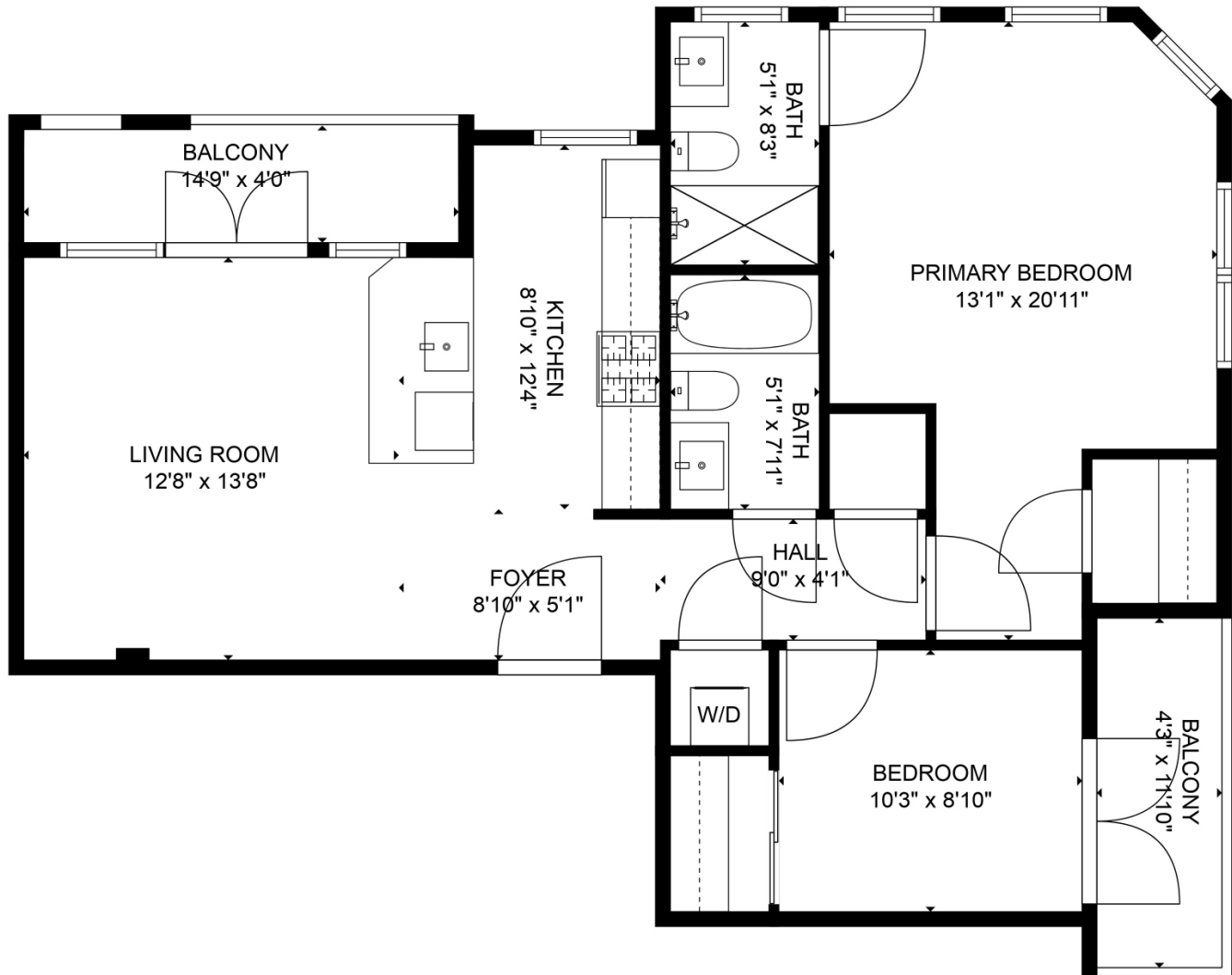
202.430.4533
Isabella.pinto@jennsmira.com

Compass Real Estate is a licensed real estate broker. All material is intended for informational purposes only and is compiled from sources deemed reliable but is subject to errors, omissions, changes in price, condition, sale, or withdrawal without notice. No statement is made as to the accuracy of any description or measurements (including square footage). This is not intended to solicit property already listed. No financial or legal advice provided. Equal Housing Opportunity. Photos may be virtually staged or digitally enhanced and may not reflect actual property conditions. Compass is licensed as Compass Real Estate in DC and as Compass in Virginia and Maryland. 1313 14th Street NW, Washington, DC 20005 | 202.386.6330



4800 Georgia Ave NW #301

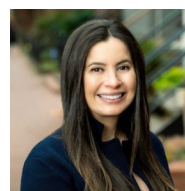
Petworth | 2 Bedrooms | 2 Bathrooms | Corner Unit



Jenn Smira

REALTOR®,
Executive Vice President

202.280.2060
jsmira@jennsmira.com



Isabella Pinto

REALTOR®, DC, MD, & VA

202.430.4533
Isabella.pinto@jennsmira.com

COMPASS

Compass Real Estate is a licensed real estate broker. All material is intended for informational purposes only and is compiled from sources deemed reliable but is subject to errors, omissions, changes in price, condition, sale, or withdrawal without notice. No statement is made as to the accuracy of any description or measurements (including square footage). This is not intended to solicit property already listed. No financial or legal advice provided. Equal Housing Opportunity. Photos may be virtually staged or digitally enhanced and may not reflect actual property conditions. Compass is licensed as Compass Real Estate in DC and as Compass in Virginia and Maryland. 1313 14th Street NW, Washington, DC 20005 | 202.386.6330

