

COMPASS

Jenn Smira
& CO.

FINE
HOMES

822 Kennedy St. NW #8

Petworth | 2 Bedrooms | 2.5 Bathrooms | Roof Deck & Parking



Penthouse Living with Private Roof Deck & Designer Finishes

Welcome to 822 Kennedy Street NW #8, a stunning two-level, 2 bedroom, 2.5-bath penthouse condo with parking that lives like a spacious modern townhouse—complete with a private rooftop oasis and contemporary finishes throughout.

Step inside to discover a gracious open-concept living area with wide-plank light oak flooring, soaring ceilings, and walls of glass that flood the space with natural light. The chef's kitchen is a true showpiece, featuring quartz countertops, a custom tile backsplash, crisp white cabinetry, and a stainless steel appliance suite. The oversized island—accented with warm brown paneling—provides ample seating and style, making it perfect for everyday living and effortless entertaining. Just off the living area, a private balcony offers the ideal spot to sip morning coffee or unwind in the evening.

Upstairs, the expansive second level features a spacious guest bedroom and a spa-inspired hall bath with timeless finishes. The showstopping primary suite is enveloped in natural light, offering sweeping views, a custom walk-in closet, and a beautifully appointed en-suite bath with bold black-and-white tilework.

Take your living experience to the next level—literally—with your own private rooftop deck, offering panoramic city views and a front-row seat to the vibrant Kennedy Street corridor.

Tucked within a boutique building, this home is perfectly positioned amid the best of the neighborhood. Just outside your door, enjoy easy access to local favorites like ANXO Cidery, cozy coffee shops, grocery stores, and Target. A short drive away, The Parks at Walter Reed offers a dynamic mix of retail, dining, and wellness experiences—including Whole Foods Market, Mezeh, The Charmery, Nailsaloon, and more—bringing convenience and community together in one vibrant hub.



Kaushik Rath

REALTOR®,
Senior Vice President

917.678.1307
Kaushik.Rath@jennsmira.com



Jenn Smira

REALTOR®,
Executive Vice President

202.280.2060
jsmira@jennsmira.com

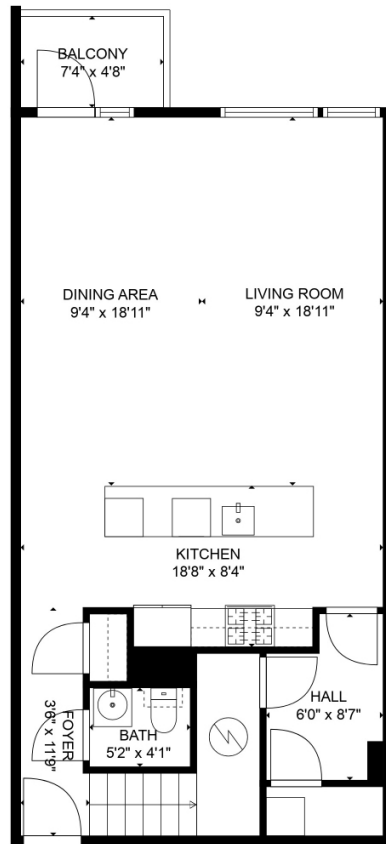
COMPASS

Compass Real Estate is a licensed real estate broker. All material is intended for informational purposes only and is compiled from sources deemed reliable but is subject to errors, omissions, changes in price, condition, sale, or withdrawal without notice. No statement is made as to the accuracy of any description or measurements (including square footage). This is not intended to solicit property already listed. No financial or legal advice provided. Equal Housing Opportunity. Photos may be virtually staged or digitally enhanced and may not reflect actual property conditions. Compass is licensed as Compass Real Estate in DC and as Compass in Virginia and Maryland. 1313 14th Street NW, Washington, DC 20005 | 202.386.6330

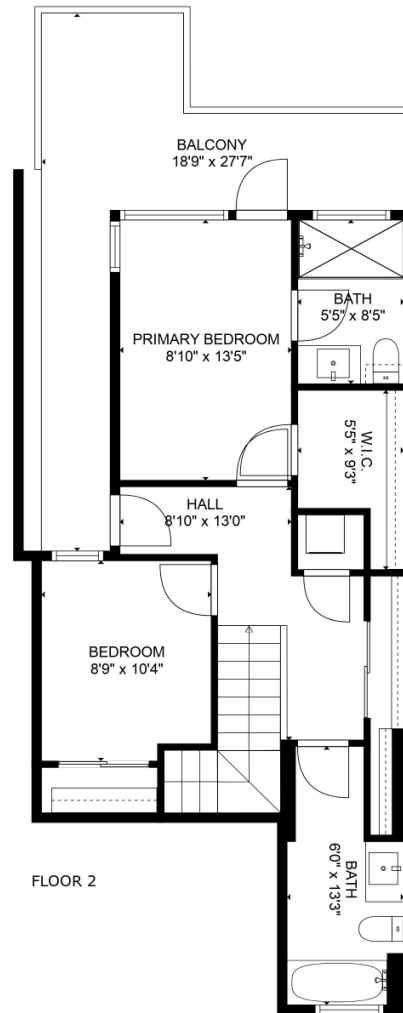


822 Kennedy St. NW #8

Petworth | 2 Bedrooms | 2.5 Bathrooms | Roof Deck & Parking



FLOOR 1



FLOOR 2



Kaushik Rath

REALTOR®,
Senior Vice President

917.678.1307
Kaushik.Rath@jennsmira.com



Jenn Smira

REALTOR®,
Executive Vice President

202.280.2060
jsmira@jennsmira.com

COMPASS

Compass Real Estate is a licensed real estate broker. All material is intended for informational purposes only and is compiled from sources deemed reliable but is subject to errors, omissions, changes in price, condition, sale, or withdrawal without notice. No statement is made as to the accuracy of any description or measurements (including square footage). This is not intended to solicit property already listed. No financial or legal advice provided. Equal Housing Opportunity. Photos may be virtually staged or digitally enhanced and may not reflect actual property conditions. Compass is licensed as Compass Real Estate in DC and as Compass in Virginia and Maryland. 1313 14th Street NW, Washington, DC 20005 | 202.386.6330

