

COMPASS

Jenn Smira
& CO.

FINE
HOMES

301 Whittier St NW #203

Takoma DC | 1 Bedroom | 1 Bathroom | In-unit Laundry



Light-Filled Art Deco Charm in the Heart of Takoma DC

Welcome to 301 Whittier Street NW #203, a rarely available and beautifully appointed one-bedroom, one-bathroom condo in the vibrant Takoma DC neighborhood. Located just a few blocks from the Red Line at Takoma Metro, this sun-filled residence offers the perfect blend of timeless character and modern convenience. Set within a striking Art Deco building designed by renowned D.C. architect George T. Santmyers, this spacious second-floor unit showcases architectural charm and a well-designed layout that maximizes both flow and functionality. Step into the expansive living room where rich hardwood floors create a cozy ambiance. Generously sized, the living space easily accommodates multiple seating areas and opens to a flexible nook—ideal for a home office, reading corner, or entryway lounge.

The renovated kitchen is a chef's delight, featuring stainless steel appliances (including a gas range), quartz countertops, and a stylish custom tile backsplash. Hosting is a joy in the adjacent dining room, surrounded by walls of windows that bring in beautiful natural light—perfect for intimate dinners or lively gatherings. A hallway leads to the spacious bedroom, which enjoys two sunlit exposures and ample room for a king-sized bed. The updated full bath adds vintage flair with its original tile floors, subway tile accents, and a sleek custom vanity. Additional highlights include a Bosch in-unit washer and dryer for everyday ease, ample closet space, and a warm, inviting atmosphere throughout. An additional secured storage space in the building's lower level completes this home.

Located in a walkable, tree-lined neighborhood, you're just moments from Safeway, local favorites like Donut Run, Lost Sock Roasters, Roscoe's, and Takoma Beverage Company, plus the growing retail hub at The Parks at Walter Reed. With Metro, green spaces, and a welcoming



Jenn Smira

REALTOR®,
Executive Vice President

202.280.2060
jsmira@jennsmira.com



Don Bunuan

REALTOR®, DC & MD

301.213.6332
Don.Bunuan@jennsmira.com

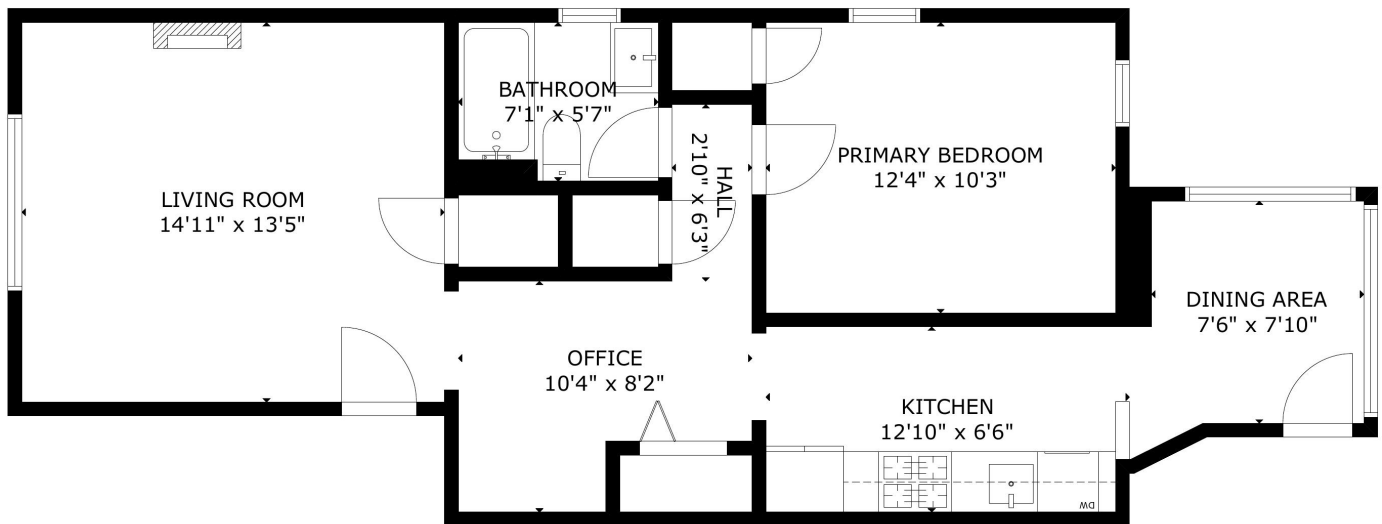
COMPASS

Compass Real Estate is a licensed real estate broker. All material is intended for informational purposes only and is compiled from sources deemed reliable but is subject to errors, omissions, changes in price, condition, sale, or withdrawal without notice. No statement is made as to the accuracy of any description or measurements (including square footage). This is not intended to solicit property already listed. No financial or legal advice provided. Equal Housing Opportunity. Photos may be virtually staged or digitally enhanced and may not reflect actual property conditions. Compass is licensed as Compass Real Estate in DC and as Compass in Virginia and Maryland. 1313 14th Street NW, Washington, DC 20005 | 202.386.6330



301 Whittier St NW #203

Takoma DC | 1 Bedroom | 1 Bathroom | In-unit Laundry



Jenn Smira

REALTOR®,
Executive Vice President

202.280.2060
jsmira@jennsmira.com



Don Bunuan

REALTOR®, DC & MD

301.213.6332
Don.Bunuan@jennsmira.com

COMPASS

Compass Real Estate is a licensed real estate broker. All material is intended for informational purposes only and is compiled from sources deemed reliable but is subject to errors, omissions, changes in price, condition, sale, or withdrawal without notice. No statement is made as to the accuracy of any description or measurements (including square footage). This is not intended to solicit property already listed. No financial or legal advice provided. Equal Housing Opportunity. Photos may be virtually staged or digitally enhanced and may not reflect actual property conditions. Compass is licensed as Compass Real Estate in DC and as Compass in Virginia and Maryland. 1313 14th Street NW, Washington, DC 20005 | 202.386.6330

