

3 Washington Cir #G2

WASHINGTON DC 20037

JENN
SMIRA
TEAM



MEDICAL OFFICE SPACE FOR LEASE | PRIME LOCATION

Turn Key Second-Generation Medical Office Space

This premier second-generation medical office space at 3 Washington Circle NW offers a rare opportunity for healthcare providers to establish or expand their presence in one of Washington, DC's most prestigious and high-traffic medical corridors. Located in the heart of Foggy Bottom, directly across from George Washington University Hospital and steps from George Washington University, this 3,134-square-foot suite is fully built out and thoughtfully designed to support a wide range of medical specialties and outpatient services. The existing configuration includes multiple exam rooms, private physician offices, a welcoming reception area, and ample administrative space—providing a true turnkey solution that significantly reduces build-out costs and move-in delays.

Strategically positioned on a high-visibility circle and easily accessible via the Foggy Bottom-GWU Metro Station, numerous Metrobus lines, and major commuter routes, this location offers exceptional connectivity for both patients and staff. The building is ADA-compliant, elevator-served, and includes on-site parking, enhancing convenience and accessibility. Surrounded by a dense network of healthcare institutions, academic facilities, and professional offices, 3 Washington Circle is ideally suited for general practitioners, specialists, and group practices seeking proximity to a built-in referral base and collaborative opportunities.



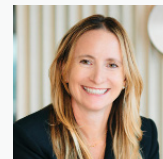
**BEST
WASHINGTONIAN
2024**

REALTRENDS
THE THOUSAND
AS ADVERTISED IN THE WALL STREET JOURNAL



Kaushik Rath
SENIOR VICE PRESIDENT
REALTOR® DC/MD/VA

KAUSHIK.RATH@JENNSMIRA.COM
917.678.1307



Jennifer Smira
EXECUTIVE VICE PRESIDENT
REALTOR® DC/MD/VA

JSMIRA@JENNSMIRA.COM
202.280.2060

COMPASS



Compass is a licensed real estate brokerage that abides by Equal Housing Opportunity laws. Information is compiled from sources deemed reliable but is not guaranteed. All measurements and square footages are approximate. This is not intended to solicit property already listed. Compass is licensed as Compass Real Estate in DC and as Compass in Virginia and Maryland. 1313 14th Street NW, Washington, DC 20005 | 202.386.6330