

# 8213 River Road

BETHESDA, MD 20817

JENN  
SMIRA  
TEAM



JENNSMIRA.COM



3 BEDS | 4 BATHS | GARAGE PARKING

## Luxury Townhome with Resort-Style Living in Exclusive Bethesda Gated Community

Welcome to 8213 River Road, an exquisite luxury townhome in Bethesda's resort-style gated and staffed community, Quarry Springs. Constructed in 2020, this gorgeous 4-level home is defined by modern architecture and European influences and features an elevator for convenient access to each level.

The ground floor boasts a sun-filled foyer and a perfect space for a home office or den. From this floor, you can also access your private 2-car garage and elevator to the upper floors.

The second floor features an expansive, open gourmet kitchen with a dramatic 12-foot white quartz waterfall island, porcelain farm sink, and solid crystal chandeliers. This floor also features an open living room with enormous bay windows, a dining area, and powder room.



The third floor features an elegant primary suite, with a large walk-in closet, en suite bathroom with dual sinks, and a luxurious walk-in shower. Two additional bedrooms and one more full bathroom complete this floor.

Finally, the fourth floor features a four-season rooftop terrace. This truly unique space invites you to indulge in outdoor living all year. The terrace can easily transition from glass-enclosed, to screened, or open air. It also boasts two separate sun decks, one for dining and one for lounging.





## OUR FAVORITE FEATURES:

- **Elevator Access:** A private elevator for easy access to all four levels of this elegant townhome.
- **Four-Season Rooftop Terrace:** A versatile rooftop space with two sun decks, easily transitioning between enclosed, screened, or open-air.
- **Resort-Style Living:** Enjoy a luxury townhome experience with access to exclusive amenities, including a 10,000 sq ft clubhouse, pool, hot tub, and fitness center.





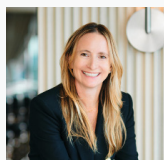
## IN THE NEIGHBORHOOD

# Quarry Springs

The community features a luxurious 10,000 square foot clubhouse, a resort-style pool, hot tub, and fitness center, providing an array of amenities to keep you active and entertained. Outdoor enthusiasts will love the C&O Canal trails just 2 miles away. This prime location is also near downtown Bethesda (4 miles), Cabin John Village (4 miles), Tysons Corner (8 miles), and Georgetown (9 miles). Traveling is effortless with Lock & Go convenience in this exceptional 24/7 gated community. Quarry Springs is in the Winston Churchill cluster and close to top private schools in Bethesda and Potomac.



**BEST  
WASHINGTONIAN  
2024**



**Jennifer Smira**  
EXECUTIVE VICE PRESIDENT  
REALTOR® DC/MD/VA

JSMIRA@JENNSMIRA.COM  
202.280.2060



**Sarah Bradley**  
REALTOR®

SARAH.BRADLEY@JENNSMIRA.COM  
301.651.6056

**COMPASS**



Compass is a licensed real estate brokerage that abides by Equal Housing Opportunity laws. Information is compiled from sources deemed reliable but is not guaranteed. All measurements and square footages are approximate. This is not intended to solicit property already listed. Compass is licensed as Compass Real Estate in DC and as Compass in Virginia and Maryland. 1313 14th Street NW, Washington, DC 20005 | 202.386.6330