

# 6502 Summerton Way

SPRINGFIELD VA 22150

\$849,000

JENN  
SMIRA  
TEAM



JENNSMIRA.COM



3 BEDS | 3.5 BATHS | GARAGE PARKING

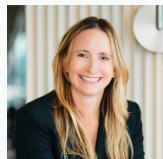
## Charming Single Family Home in the Charleston Collection Neighborhood

- Conveniently located adjacent to Springfield Town Center, Metro, and major transportation routes
- Nearly 3,000 sqft of living space across three levels
- Open-concept layout featuring a spacious living/ dining area, family room, and an eat-in kitchen
- Updated kitchen with skylights, stylish backsplash, granite countertops, and stainless steel appliances
- Inviting family room with a cozy fireplace
- Upstairs features three generously sized bedrooms and two bathrooms, including a luxurious primary suite with walk-in closet and updated en-suite bathroom with a soaking tub and glass-enclosed shower
- Lower level with substantial recreation space, large storage and laundry room, full bathroom, and versatile bonus room (suitable as a guest room or office)
- Laundry room provides access to an extra-large bonus area for storage or potential gym
- Spacious backyard with in-ground sprinkler system and a back deck ideal for outdoor dining
- Two-car garage and driveway offer ample parking
- Semi Annual HOA Fee: \$485.00
- Lot Size: 0.21a / 8965sf
- Year Built: 1992



**BEST  
WASHINGTONIAN  
2024**

**THE THOUSAND**  
AS ADVERTISED BY  
THE WALL STREET JOURNAL



**Jennifer Smira**  
EXECUTIVE VICE PRESIDENT  
REALTOR® DC/MD/VA

JSMIRA@JENNSMIRA.COM  
202.280.2060



**Leslie Dembinski**  
REALTOR® DC/MD/VA

LESLIE@LESLIEDEMBINSKI.COM  
202.365.0903

COMPASS



Compass is a licensed real estate brokerage that abides by Equal Housing Opportunity laws. Information is compiled from sources deemed reliable but is not guaranteed. All measurements and square footages are approximate. This is not intended to solicit property already listed. Compass is licensed as Compass Real Estate in DC and as Compass in Virginia and Maryland. 1313 14th Street NW, Washington, DC 20005 | 202.386.6330