

# 1939 12th St NW #502

WASHINGTON, DC 20009

JENN  
SMIRA  
TEAM



JENNSMIRA.COM



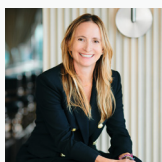
2 BEDS | 2 BATHS | PRIVATE ROOFDECK

## Exquisite Penthouse Condo with Stunning Monument Views

Experience the epitome of modern urban living in this exquisite two-level penthouse condo, ideally located in the vibrant core of Washington, DC. This refined residence boasts 2 spacious bedrooms and 2 elegantly appointed bathrooms, with over 1,000 square feet of thoughtfully updated living space.

Upon entering, you're welcomed by sleek hardwood floors, a premium appliance suite, and contemporary fixtures throughout. The open-concept living area seamlessly extends to multiple private outdoor spaces, highlighted by a stunning 500-square-foot corner rooftop terrace with breathtaking views of the Washington Monument. Recent upgrades include a new HVAC system (Feb 2023), a washer/dryer set (Sep 2021), a new hot tub cover (Aug 2024), and integrated smart Philips Hue lighting for a modern, sophisticated ambiance.

Unwind and entertain on your exclusive rooftop terrace, complete with a hot tub, outdoor shower, and panoramic views of the DC skyline—perfect for enjoying sunsets or the 4th of July fireworks. Take advantage of the prime location with easy access to the dynamic U Street Corridor, Shaw, and Logan Circle, all just a short walk away. Explore a wide variety of shops, dining options, and convenient metro access right at your doorstep.



**Jennifer Smira**  
EXECUTIVE VICE PRESIDENT  
REALTOR® DC/MD/VA

JSMIRA@JENNSMIRA.COM  
202.280.2060



Compass is a licensed real estate brokerage that abides by Equal Housing Opportunity laws. Information is compiled from sources deemed reliable but is not guaranteed. All measurements and square footages are approximate. This is not intended to solicit property already listed. Compass is licensed as Compass Real Estate in DC and as Compass in Virginia and Maryland. 1313 14th Street NW, Washington, DC 20005 | 202.386.6330