

# 4201 Cathedral Ave NW #702E

WASHINGTON, DC 20016

JENN  
SMIRA  
TEAM





3 BED | 1.5 BATH | POOL | PARKING

## Luxurious and Amenity Rich, What More Could You Ask For?

Welcome to The Towers; the impressive and sought after condominium building, located in Wesley Heights. This 3BD/1.5BA home with garage parking offers new hardwood floors throughout, an abundance of natural light, Elfa closet systems, and a well thought out, seamless open floor plan. The gleaming new kitchen features Samsung stainless steel appliances with gas cooking, Carrara Pentel quartz counters, ample cabinet space, recessed lighting, a breakfast bar and more. This rare condo offers a total of three bedrooms; one offers an en-suite bath, another an extra large walk-in closet, and the third could be used as an office, nursery, or in-home gym. The best part is that ALL utilities are included in the monthly condo fee (besides cable/internet). Reap all of the benefits The Towers have to offer such as 24 hour concierge, convenience store, fitness center, pool, party room, valet services, tennis courts and immediate access to Glover Archbold Trail! Everything you could need, right at your fingertips!



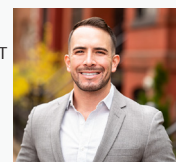
**BEST**  
WASHINGTONIAN  
**2022**

**THE THOUSAND**  
AS ADVERTISED BY  
THE WALL STREET JOURNAL



**Jennifer Smira**  
EXECUTIVE VICE PRESIDENT  
REALTOR® DC/MD/VA

JSMIRA@COMPASS.COM  
202.280.2060



**Jose Ramirez**

REALTOR® DC

J.RAMIREZ@COMPASS.COM  
202.876.8909

COMPASS



Compass is a licensed real estate brokerage that abides by Equal Housing Opportunity laws. Information is compiled from sources deemed reliable but is not guaranteed. All measurements and square footages are approximate. This is not intended to solicit property already listed. Compass is licensed as Compass Real Estate in DC and as Compass in Virginia and Maryland. 1313 14th Street NW, Washington, DC 20005 | 202.386.6330