

# 3606 Stewart Driveway

CHEVY CHASE, MD 20815





5 BEDS | 4.5 BATHS | PARKING

## Modern Farmhouse in Chevy Chase

Nestled on a bucolic 12,187 square foot lot in Chevy Chase, there's only one newly constructed, modern farmhouse that demands a closer look. Welcome to 3606 Stewart Driveway, a 5-bed, 4.5-bath renovated home by Francis Development where contemporary amenities and pastoral charm collide. As you make your way towards the house, a manicured lawn, picturesque facade, and covered porch draw you inside, where 6,124 square feet of handcrafted space awaits. Enter through the front door to find an expansive living room – fully stocked with a fireplace and bar – and a dynamic dining room built for all your day-to-night dining adventures. Whether you're entertaining friends or curling up with a good book, these flexible living spaces provide the ultimate answer. From room to room, the entire elevator-ready downstairs level is characterized by 7" white oak plank flooring, custom touches, and soaring 9' ceilings that add a touch of drama. Around the corner, the state-of-the-art chef's kitchen serves up cutting-edge appliances, and an island, while the 1st-floor office nearby makes working from home more productive than ever before. From here, sliding glass doors open out onto your private backyard oasis, a deck custom built to ensure you're always the host with the most. Upstairs, all three of the oversized secondary bedrooms feature large windows that envelop you in natural light. The Primary Suite that stuns with its own ensuite bath and several walk-in closets. Also found upstairs is a large laundry room with plenty of cabinets for seamless storage. Two levels down, this home has more space to uncover still in the form of a fully finished basement with a rec room and comfortable guest suite. And last but not least: A two-car garage with an indoor storage area rounds out this home's well-documented appeal. Set in the prestigious Chevy Chase neighborhood, this picturesque residence feels as if it's a world away from the bustle of urban life – even though the Metro, Downtown Bethesda, and The Chevy Chase Lake Development are all just minutes away. Explore the scenery of The Woodend Nature Sanctuary, shop for designer threads, and sample the eclectic culinary scene at your fingertips. A home with the latest in location and design, 3606 Stewart Driveway is the can't-miss opportunity of the spring season.



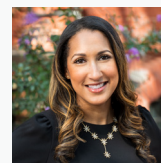
**BEST**  
WASHINGTONIAN  
**2021**

**REALTRENDS**  
**THE THOUSAND**  
AS ADVERTISED BY  
THE WALL STREET JOURNAL



**Jennifer Smira**  
EXECUTIVE VICE PRESIDENT  
REALTOR® DC/MD/VA

JSMIRA@JENNSMIRA.COM  
202.280.2060



**Alysa Francis**  
REALTOR® MD

ALYSA.FRANCIS@JENNSMIRA.COM  
202.907.6989

COMPASS



Compass is a licensed real estate brokerage that abides by Equal Housing Opportunity laws. Information is compiled from sources deemed reliable but is not guaranteed. All measurements and square footages are approximate. This is not intended to solicit property already listed. Compass is licensed as Compass Real Estate in DC and as Compass in Virginia and Maryland. 1313 14th Street NW, Washington, DC 20005 | 202.386.6350