

634 Mississippi Avenue NW

SILVER SPRING, MD 20910

JENN
SMIRA
TEAM



JENNSMIRA.COM



4 BEDS | 3.5 BATHS | PARKING

Picturesque Facade in Silver Spring

Another New Construction brought to you by award-winning Francis Development. Introducing 634 Mississippi Avenue, a state-of-the-art 4-bed, 3.5-bath craftsman home where high-end features meet modern design. Beyond the picturesque facade, you'll discover a contemporary space that's inviting and striking all at once. In this home, thoughtful details abound from the A/V structured wiring to the EV charging station, LED lighting, and the many energy-efficient features found throughout. Punctuated by light wood wide plank flooring, the main level includes a flexible living area with an amazing accent wall that can be effortlessly transformed into a dining room or home office based on whichever your lifestyle demands. Walking down the hall, you'll find a spacious, gourmet kitchen with Thermador appliances, grey soft-close cabinets, a wood-stained hood, and an island with chic gold accents. Off to the left, an expansive dining area is the perfect backdrop for all your day-to-night dining adventures, while a mudroom and pantry nearby are built to simplify your everyday routine. Around the corner, the great room exudes warmth thanks to floor-to-ceiling windows and a gas log fireplace, accentuated by a custom fireplace surround. From there, step outside onto your private patio, an outdoor oasis meant for year-round entertaining. The surprises only continue upstairs, where 2 expansive secondary bedrooms boast large walk-in closets, a hall bathroom inspires relaxation, and a tiled linen room makes doing laundry easier than ever before. Also found upstairs, the palatial primary bedroom presents two separate his/her walk-in closets as well as a spa-like bathroom with a marble shower and double showerheads. Two levels down, the meticulously crafted recreational basement space doubles as an onsite respite for residents and guests alike. Don't miss the luxury vinyl tiles lining the floor, not to mention the fitness center, storage room, or the fourth comfortable bedroom and full bath. Set in Silver Spring, the cultural hub of Montgomery County, this home has a location with something for everyone. Explore the dynamic attractions of Downtown Silver Spring, catch your favorite artists performing at The Fillmore, hit the picturesque greens of Sligo Creek Golf Course, and return home to savor the residential rhythms at your doorstep. And when you do feel like venturing out, the sights and sounds of Downtown DC can be yours within minutes. 634 Mississippi Avenue is a one-of-a-kind home that deserves your attention today. Don't miss the chance to make it your forever home!



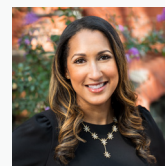
BEST
WASHINGTONIAN
2021

THE THOUSAND
AS ADVERTISED BY
THE WALL STREET JOURNAL



Jennifer Smira
EXECUTIVE VICE PRESIDENT
REALTOR® DC/MD/VA

JSMIRA@JENNSMIRA.COM
202.280.2060



Alysa Francis
REALTOR® MD

ALYSA.FRANCIS@JENNSMIRA.COM
202.907.6989

COMPASS



Compass is a licensed real estate brokerage that abides by Equal Housing Opportunity laws. Information is compiled from sources deemed reliable but is not guaranteed. All measurements and square footages are approximate. This is not intended to solicit property already listed. Compass is licensed as Compass Real Estate in DC and as Compass in Virginia and Maryland. 1313 14th Street NW, Washington, DC 20005 | 202.386.6350